

# Green and Healthy Homes



**BUILDER  
DEVELOPER  
SOLUTIONS**

[www.builderdevelopersolutions.com](http://www.builderdevelopersolutions.com)

# Green and Healthy Homes

Builder Developer Solutions (BDS) is a leading producer of systems built homes. The state coded and approved modular building system developed by BDS, has been used successfully in urban infill projects through out the mid west including South Bend, Indiana and Detroit, Michigan.

BDS has achieved five (5) star Energy Star ratings scoring 74 or less on the Detroit project. We were also rated Silver level Green using Green Communities criteria. In addition, we work closely with the developer to create homes that are esthetically compatible with the existing homes in the neighborhoods we work in.

Quality, Name Brand, products Certified Green and/or Energy Star are available in every home we produce.

**Trane High Efficiency Furnace** – For more than 90 years Trane has been the trusted name in keeping your family comfortable. We help you improve your comfort and reduce fuel costs by installing a Trane Energy Star compliant furnace in your new home.

**Rheem Tankless Water Heater** – designed to enhance your lifestyle, utilize advanced technology for energy efficiency, and supply a continuous flow of low-cost hot water whenever and wherever you need it. By using energy to heat water only when you need it, no energy is wasted keeping water hot waiting to be used.

**Moen Flow Optimized Fixtures** – optimizing flow without sacrificing performance, add elegant accents to your bath while conserving water up to 32%.

**Whirlpool Appliances** - save on water and energy while helping reduce your family's impact on the environment. Engineered to be extremely efficient without sacrificing the outstanding performance you've come to count on.

**Broan Power Vents** – powerful, quiet, energy efficient vents. These products use high efficiency motors and lighting that can reduce energy consumption by as much as 65% - all without sacrificing performance.

**Nuvo Energy Star Lighting** - use 66% less energy than a standard incandescent bulb and last up to 10 times longer. Save about one third of your energy bill without sacrificing style or fashion.

**Briggs Toilets** – high efficiency dual flush gives you a choice between 1.6 gallons per flush and 1.0 gallon per flush. Conserve water when you can while maintaining a full flush ability when needed.

**Sherwin Williams Paints & Primers** - low VOC and water soluble paints and primers.

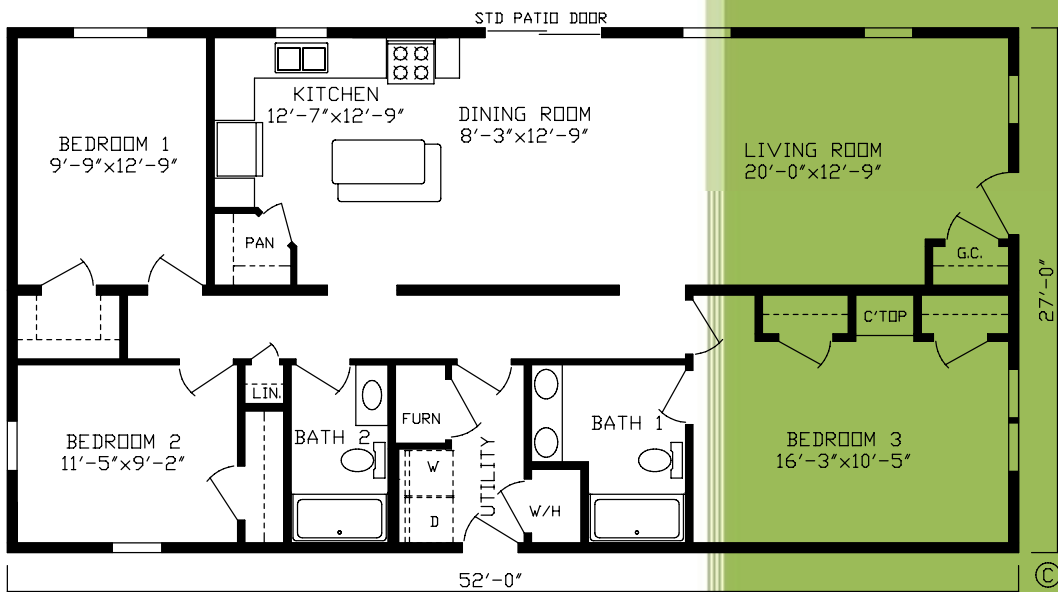
**Shaw Carpets** - carpet and rug institute certified green formaldehyde free.

**Foamseal Adhesives** - used to bond joists and studs to wall board. Water based environmentally friendly adhesives meet ASTM-C557 specifications.

**Nascor I Joists** - engineered I joists that reduce waste. Protects the environment and supplies consistent high quality.

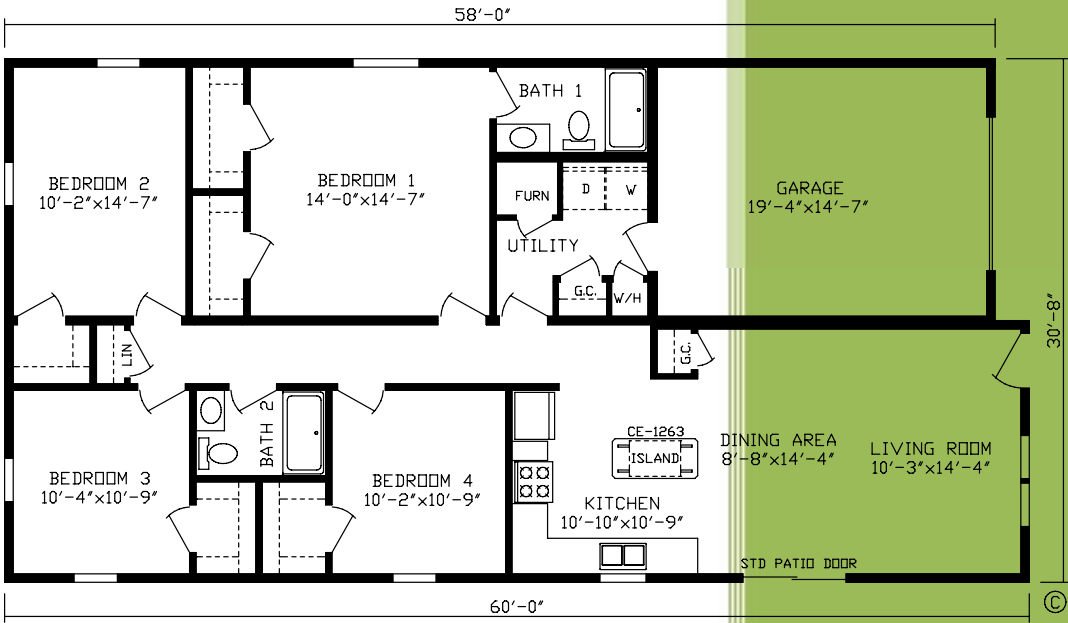
**Pella Windows** - Low E Argon gas filled dual pane vinyl windows reduce energy bills.

# Green and Healthy Homes



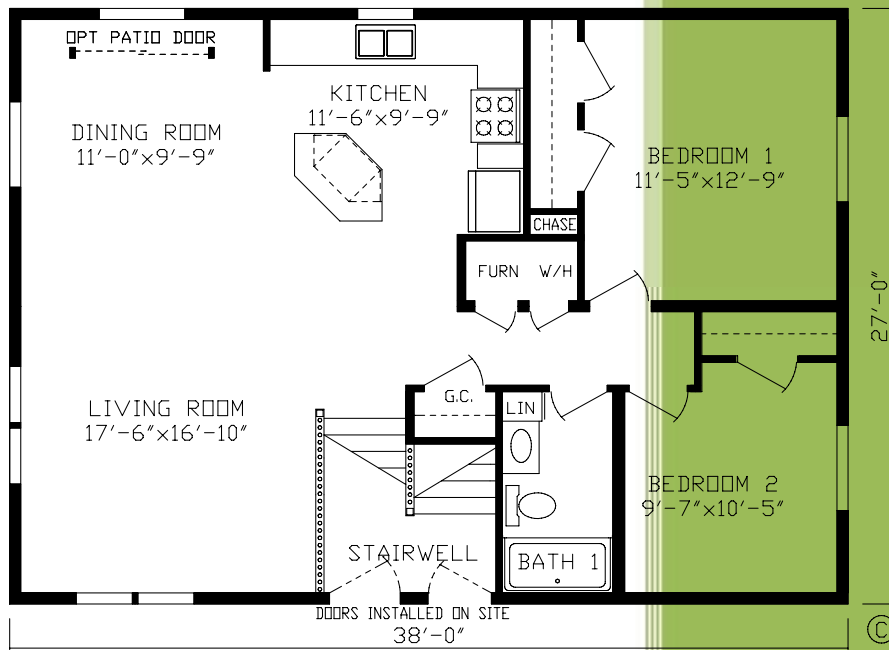
**Order# 92548 1404 Sq. Ft. 3 Bedroom Ranch**

# Green and Healthy Homes



**Order# 92550 1500 Sq. Ft. 4 Bedroom Ranch**

# Green and Healthy Homes



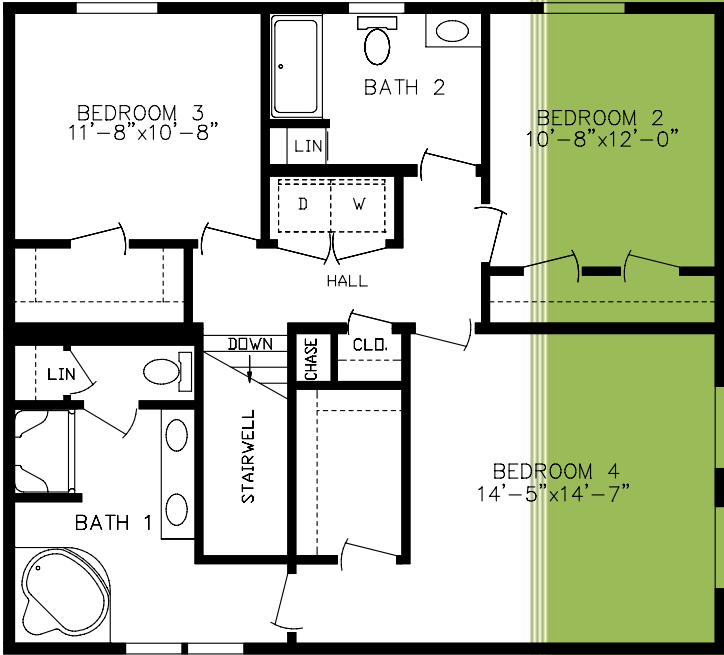
**Order# 92519 1026 Sq. Ft. 2 Bedroom Bi-Level**

# Green and Healthy Homes



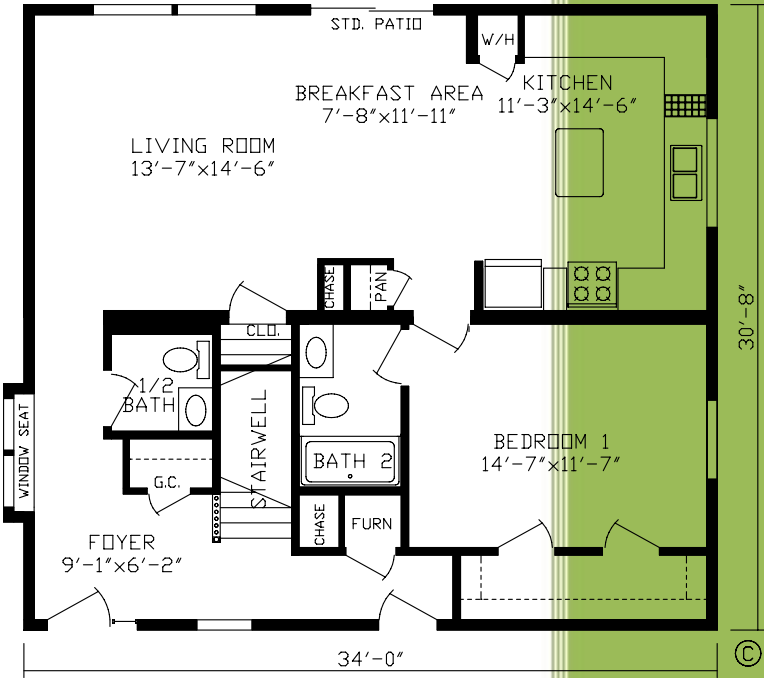
**Order# 99506 2085 Sq. Ft. 4 Bedroom Two-Story**

# Green and Healthy Homes



©

**Second Story**



©

**First Story**

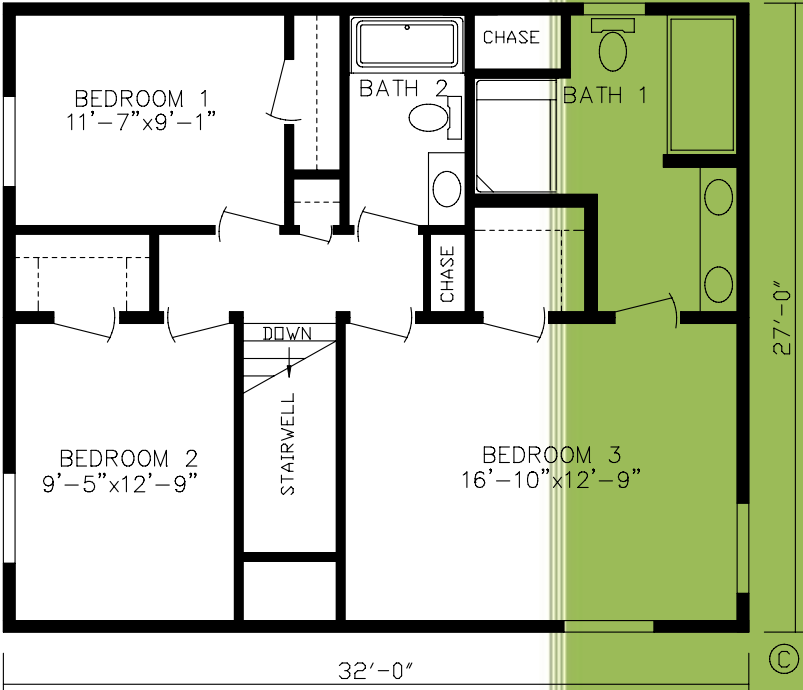
**Order# 99506 2085 Sq. Ft. 4 Bedroom Two-Story**

# Green and Healthy Homes

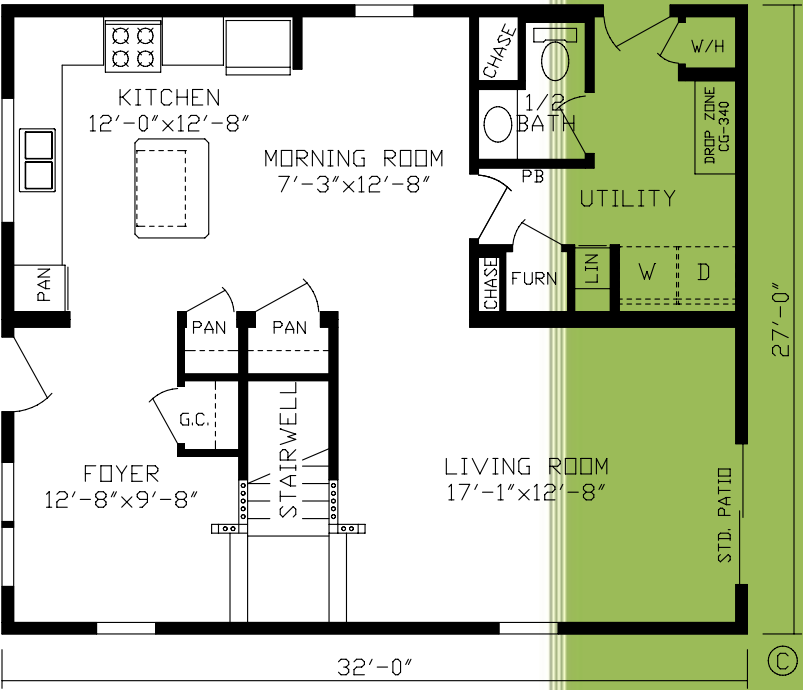


**Order# 99507 1728 Sq. Ft. 3 Bedroom Two-Story**

# Green and Healthy Homes



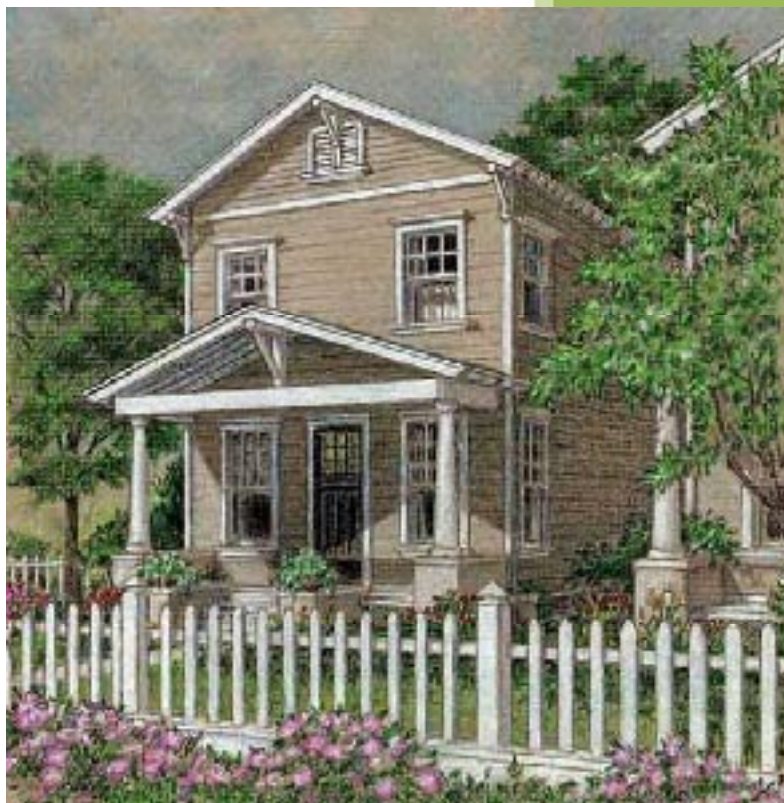
**Second Story**



**First Story**

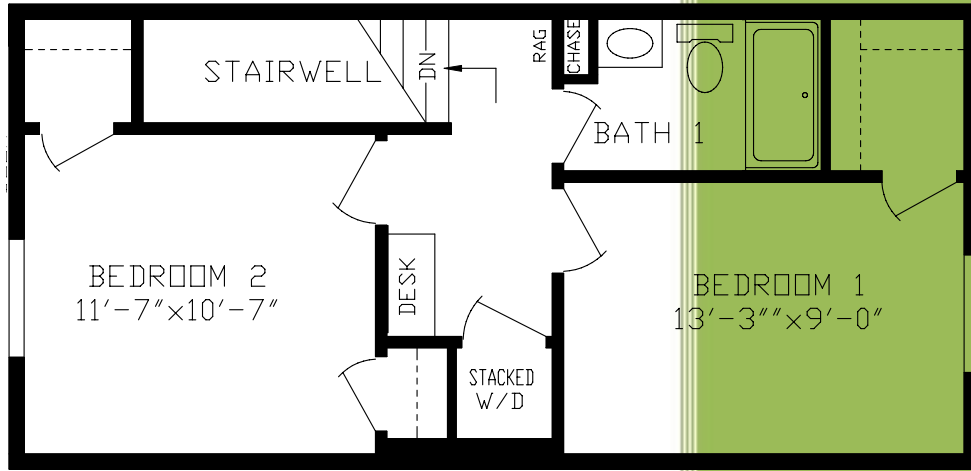
**Order# 99507 1728 Sq. Ft. 3 Bedroom Two-Story**

# Green and Healthy Homes

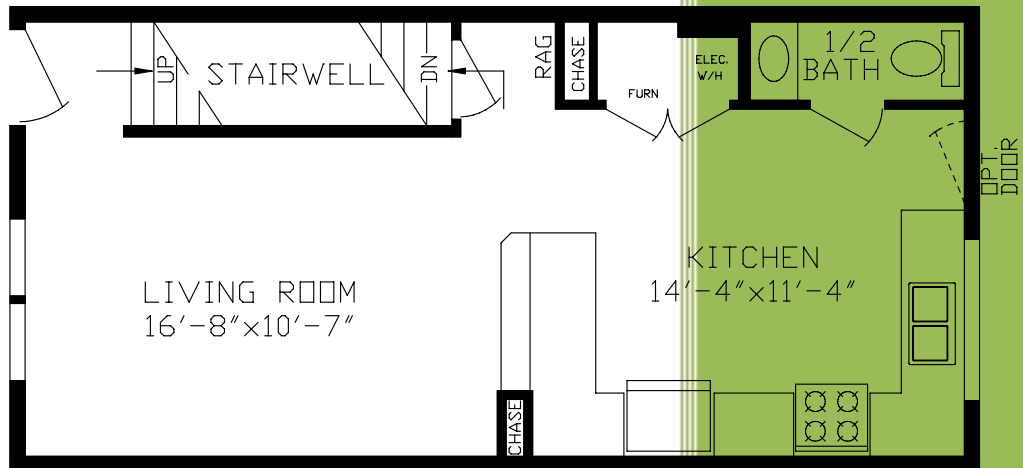


**Order# A-73312 816 Sq. Ft. 2 Bedroom Two-Story**

# Green and Healthy Homes



**Second Story**



**First Story**

**Order# A-73312 816 Sq. Ft. 2 Bedroom Two-Story**

# Green and Healthy Homes

## Standard Features Before Upgrades

### Construction

- 2"x 6" Exterior wall Studs 16" On Center
- R-19 Owens –Corning pink insulation in walls
- OSB(Oriented Strand Board on all exterior walls)
- Weather wrap on exterior walls
- R-33 Insulation in roof
- 50 lb. live load truss rafter
- 30 Year Architectural shingles
- Engineered wood "1" beam floor joist
- Sub-floor screwed to joist at seems
- Perimeter heat registers and ducts according to house plans
- ½" Drywall-primed w/ Sherwin-Williams paint finish

### Electrical

- Arc fault breakers in bedrooms
- Exterior lighting at each door
- Exhaust and lighting in each bathroom
- Ceiling lights in Bedrooms
- Exterior FGCI protected recepts
- Smoke alarms
- GFI protected kitchen and bath circuits
- Electric service for dryer in utility area

### Plumbing

- Moen faucets
- Stainless steel kitchen sink
- 40 Gallon Rheem electric water heater
- Water line shut off valves on all sinks and water closet
- Plumb and drain established for washer in utility area
- One piece molded tub units
- Bathroom sinks with pop-up drains

### Décor

- Shaw carpets
- Congoleum rolled flooring
- Drape package

### Doors and Windows

- Pella Low E gridded thermo pane windows
- Mortised hinges on all interior doors
- 6 panel exterior front door with storm door

# Green and Healthy Homes

## Standard Features Before Upgrades

### Appliances

- Whirlpool appliances
- 17 Cubic foot Whirlpool frost free refrigerator
- Range Hood Vent

### Heating and Air Conditioning

- Trane energy efficient furnace (gas or electric heat pump)
- Positive operating system for air exchange
- Computer designed duct system installed based on plans
- High efficiency heat registers & air returns

### Miscellaneous Features

- High pressure laminate counter-tops
- Adjustable cabinet shelves
- Kitchen cap molding on cabinets
- Sherwin-Williams wall finishes
- Crane vinyl lap exterior siding
- Antique brass interior door hardware
- Tack strip carpet installation w/rebond pad
- Stippled finish on ceiling

### Each home includes the following “green” enhancements:

Tankless water heaters  
Green label Carpeting  
Energy star exhaust fans  
Dwelling ventilation system per ASHRAE 62.2  
Increase ceiling insulation to R-44  
low-usage toilets, showerheads, faucets,  
Energy star lighting  
Daylight sensors and timers  
Low VOC: Primers, adhesives and paints